



OEM/ODM
— Since 2010 —



PRODUCT BROCHURE



About EVDANCE

Evdance is a leading provider of EV charging solutions. Established in 2011 and based in Shenzhen, China, we focus on the global market. We offer a range of products, including wall-mounted charging stations, portable charging devices, and home and commercial charging stations.

With over 200 professionals and 10,000 m² of advanced production facilities, we combine our power electronics expertise with strict R&D processes. This allows us to consistently deliver innovative, high-quality products that meet the diverse needs of our customers worldwide.

At Evdance, our products carry essential certifications such as CSA, UL, CE, and FCC, ensuring they meet the highest quality and safety standards. We continuously strive to enhance our products and services to lead the way in the EV charging industry.





PORTABLE EV CHARGER

×

Empowering Your EV Experience



40A
Maximum



9.6Kw
Maximum



Safety
Certification



IP66
Dustproof
Waterproof





EV-ACS1601U - 16A TYPE 1 PORTABLE EV CHARGER

Voltage: AC 110V-240V

Current: 110V- 12A 230V- 16A

Current regulation: 6/8/10/12/16A

Power: 3.84kW Max

Plug: 6-20 Plug + 5-15Adapter

Standard: SAE J1772 /IEC 62196 Type 1

IP grade: IP66

Operating temperature: -30°C to +50°C

Storage temperature: -40°C to +85°C

Certification: CE, FCC

Total length: 25ft

Packaging size: 38*11*32cm

Packaging weight: 3.46kg

Voltage: AC 110V-240V

Current: 110V- 12A 230V- 16A

Current regulation: 6/8/10/12/16A

Power: 3.84kW Max

Plug: 6-20 Plug + 5-15Adapter

Standard: SAE J3400 /Tesla NACS

IP grade: IP66

Operating temperature: -30°C to +50°C

Storage temperature: -40°C to +85°C

Certification: CE, FCC

Total length: 25ft

Packaging size: 38*11*32cm

Packaging weight: 3.43kg



EV-ACS1601T - TSL 16A TYPE 1 PORTABLE EV CHARGER



EV-ACS1601B

Voltage: AC 110V-240V

Current: 110V- 12A 240V- 16A

Current regulation: 6/8/10/12/16A

Power: 3.84kW Max

Plug: UK 3 Pin Plug

Standard: IEC 62196-2/Type 2

IP grade: IP66

Operating temperature: -30°C to +50°C

Storage temperature: -40°C to +85°C

Certification: CE, FCC

Total length: 21ft

Packaging size: 38*11*32cm

Packaging weight: 3.5kg

Voltage: AC 110V-240V

Current: 110V- 12A 230V- 16A

Current regulation: 6/8/10/12/16A

Power: 3.84kW Max

Plug: Schuko 2 Pin

Standard: IEC 62196-2/Type 2

IP grade: IP66

Operating temperature: -30°C to +50°C

Storage temperature: -40°C to +85°C

Certification: CE, FCC

Total length: 21ft

Packaging size: 38*11*32cm

Packaging weight: 3.5kg



EV-ACS1601E



EV-ACS1606U/B

Voltage: AC 110V-240V

Current: 110V- 12A 230V- 16A

Current regulation: 6/8/10/12/16A

Power: 3.84kW Max

Plug: 6-20 Plug + 5-15Adapter

Standard: SAE J1772 /IEC 62196 Type 1

IP grade: IP66

Operating temperature: -30°C to +50°C

Storage temperature: -40°C to +85°C

Certification: CE, FCC

Total length: 25ft

Packaging size: 38*11*32cm

Packaging weight: 3.46kg

Voltage: AC 110V-240V

Current: 110V- 12A 230V- 16A

Current regulation: 6/8/10/12/16A

Power: 3.84kW Max

Plug: 6-20 Plug + 5-15Adapter

Standard: SAE J3400 /Tesla NACS

IP grade: IP66

Operating temperature: -30°C to +50°C

Storage temperature: -40°C to +85°C

Certification: CE, FCC

Total length: 25ft

Packaging size: 38*11*32cm

Packaging weight: 3.43kg



EV-ACS1606T/B



EV-ACS1606B/B

Voltage: AC 110V-240V

Current: 110V- 12A 240V- 16A

Current regulation: 6/8/10/12/16A

Power: 3.84kW Max

Plug: UK 3 Pin Plug

Standard: IEC 62196-2/Type 2

IP grade: IP66

Operating temperature: -30°C to +50°C

Storage temperature: -40°C to +85°C

Certification: CE, FCC

Total length: 21ft

Packaging size: 38*11*32cm

Packaging weight: 3.5kg

Voltage: AC 110V-240V

Current: 110V- 12A 230V- 16A

Current regulation: 6/8/10/12/16A

Power: 3.84kW Max

Plug: Schuko 2 Pin

Standard: IEC 62196-2/Type 2

IP grade: IP66

Operating temperature: -30°C to +50°C

Storage temperature: -40°C to +85°C

Certification: CE, FCC

Total length: 21ft

Packaging size: 38*11*32cm

Packaging weight: 3.5kg



EV-ACS1606E/B



EV-ACS1602U

Voltage: AC 110V-240V

Current: 110V-12A 240V-16A

Current regulation: 6/8/10/12/16A

Power: 3.84kW Max

Plug: NEMA 6-20 P

Standard: SAE J1772 /IEC 62196 Type 1

Interactive indication: LED indicator light, 1.3-inch OLED screen

IP grade: IP66

Operating temperature: -30°C to +50°C

Storage temperature: -40°C to +85°C

Certification: CE, FCC

Total length: 25ft

Packaging size: 38*11*32cm

Packaging weight: 3.46kg

Voltage: AC 110V-240V

Current: 110V-12A 240V-16A

Current regulation: 6/8/10/12/16A

Power: 3.84kW Max

Plug: Schuko 2 Pin

Standard: IEC 62196 Type 2

Interactive indication: LED indicator light, 1.3-inch OLED screen

IP grade: IP66

Operating temperature: -30°C to +50°C

Storage temperature: -40°C to +85°C

Certification: CE, FCC

Total length: 25ft

Packaging size: 38*11*32cm

Packaging weight: 3.46kg



EV-ACS1602E



EV-ACS1602B

Voltage: AC 110V-240V

Current: 110V-12A 240V-16A

Current regulation: 6/8/10/12/16A

Power: 3.84kW Max

Plug: UK 3 Pin Plug

Standard: IEC 62196 Type 2

Interactive indication: LED indicator light, 1.3-inch OLED screen

IP grade: IP66

Operating temperature: -30°C to +50°C

Storage temperature: -40°C to +85°C

Certification: CE, FCC

Total length: 25ft

Packaging size: 38*11*32cm

Packaging weight: 3.46kg

Voltage: AC 110V-230V

Current: 110V- 12A 230V- 16A

Current regulation: 6/8/10/12/16A

Power: 3.84kW Max

Plug: Schuko 2 Pin

Standard: IEC 62196-2/Type 2

Interactive indication: LED indicator light, 1.77-inch TFT screen

IP grade: IP66

Operating temperature: -30°C to +50°C

Storage temperature: -40°C to +85°C

Certification: CE, FCC

Total length: 20ft

Packaging size: 38*11*32cm

Packaging weight: 2.49kg



EV-ACS1603E



EV-ACS1607U/B

Voltage: AC 110V-240V

Current: 110V-12A 240V-16A

Current regulation: 6/8/10/12/16A

Power: 3.84kW Max

Plug: NEMA 6-20 P

Standard: SAE J1772 /IEC 62196 Type 1

Interactive indication: LED indicator light, 1.3-inch OLED screen

IP grade: IP66

Operating temperature: -30°C to +50°C

Storage temperature: -40°C to +85°C

Certification: CE, FCC

Total length: 25ft

Packaging size: 38*11*32cm

Packaging weight: 3.46kg

Voltage: AC 110V-240V

Current: 110V-12A 240V-16A

Current regulation: 6/8/10/12/16A

Power: 3.84kW Max

Plug: NEMA 6-20 P

Standard: SAE J3400 /Tesla NACS

Interactive indication: LED indicator light, 1.3-inch OLED screen

IP grade: IP66

Operating temperature: -30°C to +50°C

Storage temperature: -40°C to +85°C

Certification: CE, FCC

Total length: 25ft

Packaging size: 38*11*32cm

Packaging weight: 3.46kg



EV-ACS1607T/B



EV-ACS1607B/B

Voltage: AC 110V-240V

Current: 110V-12A 240V-16A

Current regulation: 6/8/10/12/16A

Power: 3.84kW Max

Plug: UK 3 Pin Plug

Standard: IEC 62196 Type 2

Interactive indication: LED indicator light, 1.3-inch OLED screen

IP grade: IP66

Operating temperature: -30°C to +50°C

Storage temperature: -40°C to +85°C

Certification: CE, FCC

Total length: 25ft

Packaging size: 38*11*32cm

Packaging weight: 3.46kg

Voltage: AC 110V-240V

Current: 110V-12A 240V-16A

Current regulation: 6/8/10/12/16A

Power: 3.84kW Max

Plug: Schuko 2 Pin

Standard: IEC 62196 Type 2

Interactive indication: LED indicator light, 1.3-inch OLED screen

IP grade: IP66

Operating temperature: -30°C to +50°C

Storage temperature: -40°C to +85°C

Certification: CE, FCC

Total length: 25ft

Packaging size: 38*11*32cm

Packaging weight: 3.46kg



EV-ACS1607E/B



EV-ACS1602PE - PORTABLE EV CHARGER 3 PHASE 16A TYPE 2

Voltage: AC 400V 3 phase
Current: 16A Max
Current regulation: 6/8/10/12/16A
Delayed startup: 1-12 hours
Power: 11kW Max
Plug: CEE 5 Pin
Standard: IEC 62196-2/Type 2
Interactive indication: LED indicator light, 2.4-inch TFT screen
IP grade: IP66
Operating temperature: -30°C to +50°C
Storage temperature: -40°C to +85°C
Certification: CE, FCC
Test: Plug and unplug the gun tip 10,000 times
Total length: 25ft
Packaging size: 40*12.5*33.6cm
Packaging weight: 4.41kg

Voltage: AC 400V 3 phase
Current: 16A Max
Current regulation: 6/8/10/12/16A
Delayed startup: 1-12 hours
Power: 11kW Max
Plug: CEE 5 Pin
Standard: IEC 62196-2/Type 2
Interactive indication: LED indicator light, 2.4-inch TFT screen
IP grade: IP66
Operating temperature: -30°C to +50°C
Storage temperature: -40°C to +85°C
Certification: CE, FCC
Test: Plug and unplug the gun tip 10,000 times
Total length: 25ft
Packaging size: 40*12.5*33.6cm
Packaging weight: 4.41kg



EV-ACS1607PE/B



EV-ACS1603B

Voltage: AC 110V-230V

Current: 110V- 12A 230V- 16A

Current regulation: 6/8/10/13A

Power: 2.99kW Max

Plug: UK 3 Pin Plug

Standard: IEC 62196-2/Type 2

Interactive indication: LED indicator light, 1.77-inch TFT screen

IP grade: IP66

Operating temperature: -30°C to +50°C

Storage temperature: -40°C to +85°C

Certification: CE, FCC

Total length: 20ft

Packaging size: 38*11*32cm

Packaging weight: 2.42kg

Voltage: AC 400V 3 phase

Current: 16A Max

Current regulation: 6/8/10/12/16A

Delayed startup: 1-12 hours

Power: 11kW Max

Plug: UK 3 Pin Plug

Standard: IEC 62196-2/Type 2

Interactive indication: LED indicator light, 2.4-inch TFT screen

IP grade: IP66

Operating temperature: -30°C to +50°C

Storage temperature: -40°C to +85°C

Certification: CE, FCC

Test: Plug and unplug the gun tip 10,000 times

Total length: 25ft

Packaging size: 40*12.5*33.6cm

Packaging weight: 4.41kg



EV-ACS1605B - 13A TYPE 2 PORTABLE EV CHARGER



EV-ACS1605E - 16A TYPE 2 PORTABLE EV CHARGER

Voltage: AC 110V-230V

Current: 110V- 12A 230V- 16A

Current regulation: 6/8/10/12/16A

Delayed start: 1-12 hours

Power: 3.84kW Max

Plug: Schuko 2 Pin

Standard: IEC 62196-2/Type 2

Interactive indication: LED indicator light, 1.77-inch TFT screen

IP grade: IP66

Operating temperature: -30°C to +50°C

Storage temperature: -40°C to +85°C

Certification: CE, FCC

Total length: 20ft

Packaging size: 38*11*32cm

Packaging weight: 2.54kg

Voltage: AC 230V

Current: 32A Max

Current regulation: 10/16/20/24/32A

Delayed startup: 1-12 hours

Power: 7.36kW Max

Plug: CEE 3 Pin

Standard: IEC 62196-2/Type 2

Interactive indication: LED indicator light, 1.77-inch TFT screen

IP grade: IP66

Operating temperature: -30°C to +50°C

Storage temperature: -40°C to +85°C

Certification: CE, FCC

Length: 25ft

Packaging size: 38*11*32cm

Packaging weight: 3.54kg



EV-ACS3205E - 32A TYPE 2 PORTABLE EV CHARGER



EV-ACS3201U - PORTABLE EV CHARGER 1 PHASE 32A TYPE 2

Voltage: AC 208V-240V

Current: 32A Max

Power: 7.68kW Max

Plug: NEMA 14-50 P

Standard: SAE J1772/IEC 62196 Type 1

Interactive indication: LED indicator light

IP grade: IP66

Operating temperature: -30°C to +50°C

Storage temperature: -40°C to +85°C

Certification: CE, FCC

Test: Plug and unplug the gun tip 10,000 times

Total length: 25ft

Packaging size: 43*12*33.6cm

Packaging weight: 4.47kg

Voltage: AC 208V-240V

Current: 32A Max

Power: 7.68kW Max

Plug: NEMA 14-50 P

Standard: Tesla NACS/SAE J3400

Interactive indication: LED indicator light

IP grade: IP66

Operating temperature: -30°C to +50°C

Storage temperature: -40°C to +85°C

Certification: CE, FCC

Total length: 25ft

Packaging size: 43*12*34cm

Packaging weight: 4.68kg



EV-ACS3201T - TSL NACS PORTABLE EV CHARGER



EV-ACS3206U/B

Voltage: AC 208V-240V

Current: 32A Max

Power: 7.68kW Max

Plug: NEMA 14-50 P

Standard: SAE J1772/IEC 62196 Type 1

Interactive indication: LED indicator light

IP grade: IP66

Operating temperature: -30°C to +50°C

Storage temperature: -40°C to +85°C

Certification: CE, FCC

Test: Plug and unplug the gun tip 10,000 times

Total length: 25ft

Packaging size: 43*12*33.6cm

Packaging weight: 4.47kg

Voltage: AC 208V-240V

Current: 32A Max

Power: 7.68kW Max

Plug: NEMA 14-50 P

Standard: Tesla NACS/SAE J3400

Interactive indication: LED indicator light

IP grade: IP66

Operating temperature: -30°C to +50°C

Storage temperature: -40°C to +85°C

Certification: CE, FCC

Total length: 25ft

Packaging size: 43*12*34cm

Packaging weight: 4.68kg



EV-ACS3206T/B



EV-ACS3206E/B

Voltage: AC 208V-240V

Current: 32A Max

Power: 7.68kW Max

Plug: Schuko 2 Pin

Standard: IEC 62196-2/Type 2

Interactive indication: LED indicator light

IP grade: IP66

Operating temperature: -30°C to +50°C

Storage temperature: -40°C to +85°C

Certification: CE, FCC

Total length: 25ft

Packaging size: 43*12*34cm

Packaging weight: 4.68kg

Voltage: AC 208V-240V

Current: 32A Max

Power: 7.68kW Max

Plug: Schuko 2 Pin

Standard: IEC 62196-2/Type 2

Interactive indication: LED indicator light, 1.77-inch TFT screen

IP grade: IP66

Operating temperature: -30°C to +50°C

Storage temperature: -40°C to +85°C

Certification: CE, FCC

Length: 25ft

Packaging size: 43*12*33.6cm

Packaging weight: 4.98kg



EV-ACS3207E/B



EV-ACS2406U/B

Voltage: AC 208V-240V

Current: 24A Max

Power: 5.76kW Max

Plug: NEMA 14-30 P

Standard: SAE J1772/IEC 62196 Type 1

Interactive indication: LED indicator light

IP grade: IP66

Operating temperature: -30°C to +50°C

Storage temperature: -40°C to +85°C

Certification: CE, FCC

Total length: 25ft

Packaging size: 43*12*34cm

Packaging weight: 4.68kg

Voltage: AC 208V-240V

Current: 24A Max

Power: 5.76kW Max

Plug: NEMA 14-30 P

Standard: Tesla NACS/SAE J3400

Interactive indication: LED indicator light, 1.77-inch TFT screen

IP grade: IP66

Operating temperature: -30°C to +50°C

Storage temperature: -40°C to +85°C

Certification: CE, FCC

Total length: 25ft

Packaging size: 43*12*34cm

Packaging weight: 4.68kg



EV-ACS2406T/B



EV-ACS2407U/B

Voltage: AC 208V-240V
Current: 24A Max
Power: 5.76kW Max
Plug: NEMA 14-30 P
Standard: SAE J1772/IEC 62196 Type 1
Interactive indication: LED indicator light
IP grade: IP66
Operating temperature: -30°C to +50°C
Storage temperature: -40°C to +85°C
Certification: CE, FCC
Total length: 25ft
Packaging size: 43*12*34cm
Packaging weight: 4.68kg

Voltage: AC 208V-240V

Current: 24A Max

Power: 5.76kW Max

Plug: NEMA 14-30 P

Standard: Tesla NACS/SAE J3400

Interactive indication: LED indicator light, 1.77-inch TFT screen

IP grade: IP66

Operating temperature: -30°C to +50°C

Storage temperature: -40°C to +85°C

Certification: CE, FCC

Length: 25ft

Packaging size: 43*12*33.6cm

Packaging weight: 4.98kg



EV-ACS2407T/B



EV-ACS3207U/B

Voltage: AC 208V-240V
Current: 32A Max
Power: 7.68kW Max
Plug: NEMA 14-50 P
Standard: SAE J1772/IEC 62196 Type 1
Interactive indication: LED indicator light,1.77-inch TFT screen
IP grade: IP66
Operating temperature: -30°C to +50°C
Storage temperature: -40°C to +85°C
Certification: CE, FCC
Length: 25ft
Packaging size: 43*12*33.6cm
Packaging weight: 4.65kg

Voltage: AC 208V-240V
Current: 32A Max
Power: 7.68kW Max
Plug: NEMA 14-50 P
Standard: Tesla NACS/SAE J3400
Interactive indication: LED indicator light,1.77-inch TFT screen
IP grade: IP66
Operating temperature: -30°C to +50°C
Storage temperature: -40°C to +85°C
Certification: CE, FCC
Length: 25ft
Packaging size: 43*12*33.6cm
Packaging weight: 4.65kg



EV-ACS3207T/B



EV-ACS3205U - 32A TYPE 1 PORTABLE EV CHARGER

Voltage: AC 208V-240V

Current: 32A Max

Current regulation: 10A/16A/20A/24A/32A

Delayed start-up: 1-12 hours

Power: 7.68kW Max

Plug: NEMA 14-50 P

Standard: SAE J1772/IEC 62196 Type 1

Interactive indication: LED indicator light, 1.77-inch TFT screen

IP grade: IP66

Operating temperature: -30°C to +50°C

Storage temperature: -40°C to +85°C

Certification: CE, FCC

Length: 25ft

Packaging size: 43*12*33.6cm

Packaging weight: 4.39kg

Voltage: AC 208V-240V

Current: 32A Max

Current regulation: 10A/16A/20A/24A/32A

Delayed start-up: 1-12 hours

Power: 7.68kW Max

Plug: NEMA 14-50 P

Standard: Tesla NACS/SAE J3400

Interactive indication: LED indicator light, 1.77-inch TFT screen

IP grade: IP66

Operating temperature: -30°C to +50°C

Storage temperature: -40°C to +85°C

Certification: CE, FCC

Length: 25ft

Packaging size: 43*12*33.6cm

Packaging weight: 4.39kg



EV-ACS3205T



EV-ACS4001T

Voltage: AC 208V-240V

Current: 40A Max

Current regulation: 10/16/20/24/32/40A

Delayed startup: 1-12 hours

Power: 9.6kW Max

Plug: NEMA 14-50 P

Standard: Tesla NACS

Interactive indication: LED indicator light, 2.4-inch TFT screen

IP grade: IP66

Operating temperature: -30°C to +50°C

Storage temperature: -40°C to +85°C

Certification: CE, FCC

Total length: 27ft

Packaging size: 43*12.5*33.6cm

Packaging weight: 5.54kg

Voltage: AC 208V-240V

Current: 40A Max

Current regulation: 10/16/20/24/32/40A

Delayed startup: 1-12 hours

Power: 9.6kW Max

Plug: NEMA 14-50 P

Standard: SAE J1772/IEC 62196 Type 1

Interactive indication: LED indicator light, 2.4-inch TFT screen

IP grade: IP66

Operating temperature: -30°C to +50°C

Storage temperature: -40°C to +85°C

Certification: CE, FCC

Total length: 27ft

Packaging size: 43*12.5*33.6cm

Packaging weight: 5.54kg



EV-ACS4001U - TYPE 1 PORTABLE EV CHARGER



EV-ACS4005U/B

Voltage: AC 208V-240V

Current: 40A Max

Current regulation: 10/16/20/24/32/40A

Delayed startup: 1-12 hours

Power: 9.6kW Max

Plug: NEMA 14-50 P

Standard: SAE J1772/IEC 62196 Type 1

Interactive indication: LED indicator light, 2.4-inch TFT screen

IP grade: IP66

Operating temperature: -30°C to +50°C

Storage temperature: -40°C to +85°C

Certification: CE, FCC

Total length: 27ft

Packaging size: 43*12.5*33.6cm

Packaging weight: 5.54kg

Voltage: AC 208V-240V

Current: 40A Max

Current regulation: 10/16/20/24/32/40A

Delayed startup: 1-12 hours

Power: 9.6kW Max

Plug: NEMA 14-50 P

Standard: Tesla NACS

Interactive indication: LED indicator light, 2.4-inch TFT screen

IP grade: IP66

Operating temperature: -30°C to +50°C

Storage temperature: -40°C to +85°C

Certification: CE, FCC

Total length: 27ft

Packaging size: 43*12.5*33.6cm

Packaging weight: 5.54kg



EV-ACS4005T/B



EV-ACS4002U

Voltage: AC 208V-240V

Current: 40A Max

Current regulation: 10/16/20/24/32/40A

Delayed startup: 1-12 hours

Power: 9.6kW Max

Plug: NEMA 14-50 P

Standard: SAE J1772/IEC 62196 Type 1

Interactive indication: LED indicator light, 2.4-inch TFT screen

PIP grade: IP66

Operating temperature: -30°C to +50°C

Storage temperature: -40°C to +85°C

Total length: 27ft

Packaging size: 43*12.5*33.6cm

Packaging weight: 4.98kg

Voltage: AC 208V-240V

Current: 40A Max

Current regulation: 10/16/20/24/32/40A

Delayed startup: 1-12 hours

Power: 9.6kW Max

Plug: NEMA 14-50 P

Standard: Tesla NACS/SAE J3400

Interactive indication: LED indicator light, 2.4-inch TFT screen

PIP grade: IP66

Operating temperature: -30°C to +50°C

Storage temperature: -40°C to +85°C

Total length: 28ft

Packaging size: 43*12.5*33.6cm

Packaging weight: 4.98kg



EV-ACS4002T



WALL BOX EV CHARGER

×

*Enjoy
Charging
Freedom*



22Kw
Maximum



IP66
Dustproof
Waterproof



Safety
Certification



WIFI/APP/NFC
Bluetooth



EV-ACT4001T

Voltage and Wiring: Nominal 208-240 V AC single-phase

Current Output Range: 8-40 amps

Frequency: 50/60 Hz

Circuit Breaker Requirements: 50A Circuit Breaker

Input Cord: NEMA 14-50

Connector Type: Tesla NACS

Charging Cable Length: 25 FT(7.62 m)

Operating Temperature: -22°F to 122°F(-30°C to 50°C)

Storage Temperature: -40°F to 185°F(-40°C to 85°C)

Protection Level: NEMA4,IP 66

Wi-Fi: 2.4 GHz, 802.11b/g/n

Bluetooth: Bluetooth 5.2

Voltage and Wiring: Nominal 208-240 V AC single-phase

Current Output Range: 8-40 amps

Frequency: 50/60 Hz

Circuit Breaker Requirements: 50A Circuit Breaker

Input Cord: NEMA 14-50

Connector Type: SAE J1772

Charging Cable Length: 25 FT(7.62 m)

Operating Temperature: -22°F to 122°F(-30°C to 50°C)

Storage Temperature: -40°F to 185°F(-40°C to 85°C)

Protection Level: NEMA4,IP 66

Wi-Fi: 2.4 GHz, 802.11b/g/n

Bluetooth: Bluetooth 5.2



EV-ACT4001U



EV-ACT5001U

Input Voltage: AC 240V

Output Current: 50A Max

Adjustable current: 16A/24A/32A/40A/48A/50A

Power: 12kW Max

Plug: NEMA 14-50 P

Standard gun tip: SAE J1772

Interactive indication: LED Indicator, Digital Display

IP Grade: IP66

Working temperature: -30°C~+50°C

Storage temperature: -40°C~+85°C

Material: PC, TPE, Silver-plated Copper

Certification: CE, FCC

Input Voltage: AC 240V

Output Current: 50A Max

Adjustable current: 16A/24A/32A/40A/48A/50A

Power: 12kW Max

Plug: NEMA 14-50 P

Standard gun tip: TSL NACS

Interactive indication: LED Indicator, Digital Display

IP Grade: IP66

Working temperature: -30°C~+50°C

Storage temperature: -40°C~+85°C

Material: PC, TPE, Silver-plated Copper

Certification: CE, FCC



EV-ACT5001T



EV-ACT5002T

Input Voltage: AC 240V
Output Current: 50A Max
Adjustable current: 16A/24A/32A/40A/48A/50A
Power: 12kW Max
Plug: NEMA 14-50 P
Standard gun tip: TSL NACS
Interactive indication: LED Indicator, Digital Display
IP Grade: IP66
Working temperature: -30°C~+50°C
Storage temperature: -40°C~+85°C
Material: PC, TPE, Silver-plated Copper
Certification: CE, FCC

Input Voltage: AC 240V
Output Current: 50A Max
Adjustable current: 16A/24A/32A/40A/48A/50A
Power: 12kW Max
Plug: NEMA 14-50 P
Standard gun tip: SAE J1772
Interactive indication: LED Indicator, Digital Display
IP Grade: IP66
Working temperature: -30°C~+50°C
Storage temperature: -40°C~+85°C
Material: PC, TPE, Silver-plated Copper
Certification: CE, FCC



EV-ACT5002U



EV-ACT3201PE

Voltage: AC 400V 3 phase

Current: 32A Max

Current regulation: 10A/16A/20A/24A/32A

Delayed startup: 1-12 hours

Power: 22kW Max

Plug: CEE 5 Pin

Standard: IEC 62196-2/Type 2

Interactive indication: LED indicator light, 2.4-inch TFT screen

IP grade: IP66

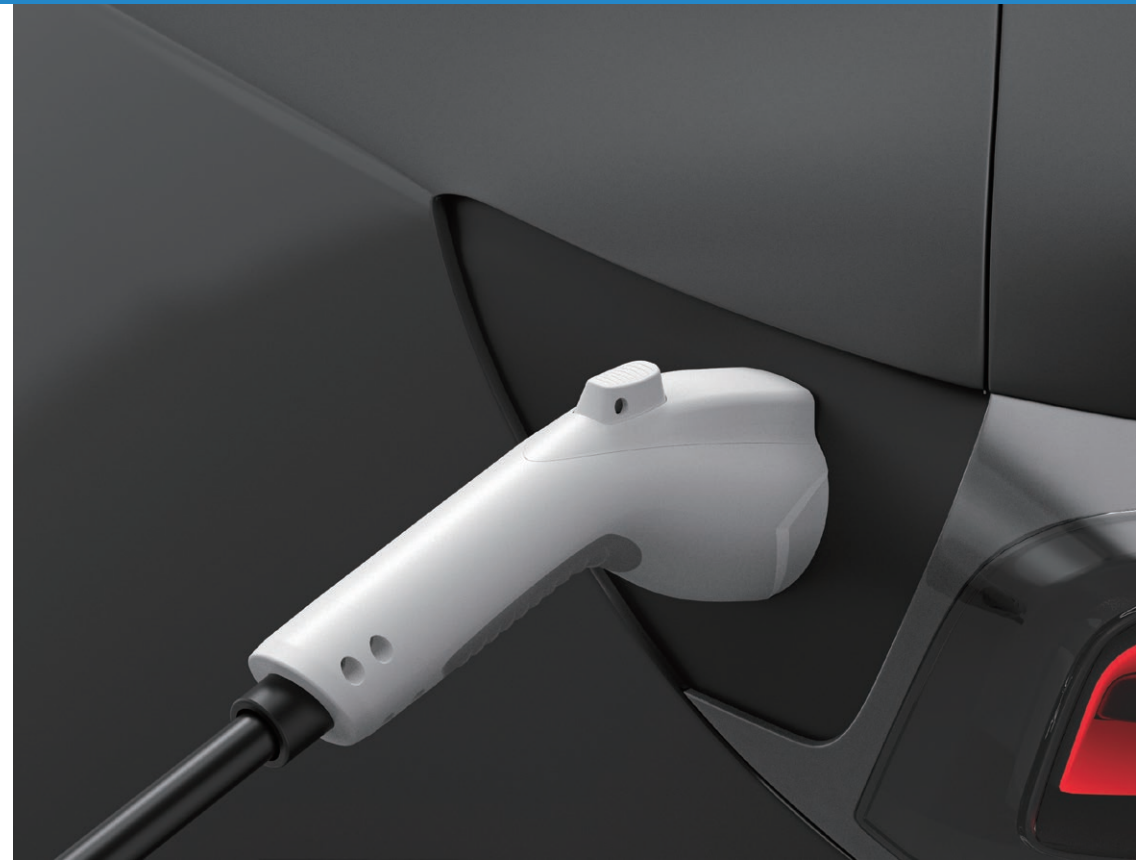
Operating temperature: -30°C to +50°C

Storage temperature: -40°C to +85°C

Certification: CE, FCC

Test: Plug and unplug the gun tip 10,000 times

Total length: 25ft





EV CHARGING Cable

×

I'm not Afraid to Park Far Away



48A
Maximum



IP66
Dustproof
Waterproof



Safety
Certification



21/40
Feet





EV-CCS3201E

Input Voltage: AC 250V Single-Phase
Output Current: 32A Max
Cable Length: 6M / 8M / 10M
Standard gun tip: IEC 62196-2/Type 2
IP Grade: IP65
Working temperature: -30°C~+50°C
Storage temperature: -40°C~+85°C
Material: PC, TPE, Silver-plated Copper
Certification: CE, FCC

Product name: J1772 Extension Cable

Rated current: 32A

Cable Length: 21FT/40FT

Certificate: CE

IP Grade: IP66

Material: TPU+copper

Voltage: 240V

Power: 7.68KW

Single package size: 34X13X43 cm

Single gross weight: 5.140 kg



EV-AC03201U



EV-AC03201T

Connector type: Tesla NACS
Rated current: 32A
Cable Length: 21FT
Certificate: CE
IP Grade: IP66
Material: TPU+copper
Voltage: 240V
Power: 7.68KW
Single package size: 38X11X32 cm
Single gross weight: 3 kg

Input Voltage: AC 110-240V Single-Phase

Output Current: 40A Max

Standard gun tip: SAE J1772

Cable Length: 21FT / 40FT

IP Grade: IP66

Working temperature: -30°C~+50°C

Storage temperature: -40°C~+85°C

Material: PC, TPE, Silver-plated Copper

Certification: CE, FCC



EV-AC04001U



EV-AC05002T

Input Voltage: AC 110-240V Single-Phase
Rated current: 50A Max
Connector type: Tesla NACS
Cable Length: 21 FT / 40 FT
IP Grade: IP66
Working temperature: -30°C~+50°C
Storage temperature: -40°C~+85°C
Material: PC, TPE, Silver-plated Copper
Certificate: CE FCC

Input Voltage: AC 110-240V Single-Phase
Output Current: 50A Max
Standard gun tip: SAE J1772
Cable Length: 21FT / 40FT
IP Grade: IP66
Working temperature: -30°C~+50°C
Storage temperature: -40°C~+85°C
Material: PC, TPE, Silver-plated Copper
Certification: CE, FCC



EV-AC05001U



The Shell is Made of High-quality PC Material, Which is Fire-resistant and High-temperature Resistant



5um Silver-plated Copper Alloy Pins Provide Superior Conductivity

EV CHARGING ADAPTER

×

Free Conversion Charging Worry Free



240V& 80A
Maximum



IP66

Dustproof
Waterproof



Safety
Certification



Small
Portable





EV-JT01 - J1772 TO TESLA ADAPTER

Input Voltage: AC 240V Single-Phase

Rated current: 80A Max

Connector type: Male J1772-Female Tesla NACS

IP Grade: IP65

Working temperature: -30°C~+50°C

Storage temperature: -40°C~+85°C

Material: PC, Silver-plated Copper

Certificate: CE, FCC

Input Voltage: AC 250V Single-Phase

Output Current: 80A Max

Connector type: Male Tesla NACS-Female J1772

IP Grade: IP65

Working temperature: -30°C~+50°C

Storage temperature: -40°C~+85°C

Material: PC,PA66+25% Glass Fibre,Silver-plated Copper

Certification: CE, FCC



EV-JT02 - SHORT TESLA TO J1772 ADAPTER



EV-JT03 - CCS1 TO TESLA ADAPTER

Input Voltage: DC 200-1000V

Rated current: 500A Max

Power: 250kW Max

Connector type: Male CCS1-Female Tesla NACS

IP Grade: IP65

Working temperature: -30°C~+50°C

Storage temperature: -40°C~+85°C

Material: PC, Silver-plated Copper

Certificate: CE, FCC

Input Voltage: AC 240V Single-Phase

Output Current: 80A Max

Connector type: Male J1772-Female Tesla NACS

IP Grade: IP65

Working temperature: -30°C~+50°C

Storage temperature: -40°C~+85°C

Length: 21FT / 40FT

Material: PC, Silver-plated Copper

Certification: CE, FCC



EV-JT04 - J1772 TO TESLA ADAPTER



EV-JT05 - LONG TESLA TO J1772 ADAPTER

Input Voltage: AC 250V Single-Phase

Rated current: 60A Max

Connector type: Male Tesla NACS-Female J1772

IP Grade: IP65

Working temperature: -30°C~+50°C

Storage temperature: -40°C~+85°C

Material: PC,PA66+25% Glass Fibre,Silver-plated Copper

Certificate: CE, FCC

Input Voltage: DC 200-1000V

Rated current: 500A Max

Power: 250kW Max

Connector type: Male CCS1-Female Tesla NACS

IP Grade: IP65

Working temperature: -30°C~+50°C

Storage temperature: -40°C~+85°C

Material: PC, Silver-plated Copper

Certificate: CE, FCC



EV-JT06 - CCS1 TO TESLA ADAPTER



EV-JT07 - V2L DISCHARGE ADAPTER

Outlet: NEMA 5-15(AC)
Rated current: 15A Max
Connector type: J1772
IP Grade: IP65
Working temperature: -30°C~+50°C
Storage temperature: -40°C~+85°C
Material: PC, Silver-plated Copper
Certificate: CE, FCC

Products: DC NACS to CCS1 Adapter
Rated current: 500A Max
Voltage: DC 200-1000V
Charging port: CCS1
Inlet port: NACS
IP Grade: IP66
Operating temperature: -30°C to +50°C
Storage temperature: -40°C to +85°C
Material: PC, Copper



EV-JT08 - TSL TO CCS1 ADAPTER



EV-JT09 - TSL TO CCS1 ADAPTER

Products: DC NACS to CCS1 Adapter

Rated current: 500A Max

Voltage: DC 200-1000V

Charging port: CCS1

Inlet port: NACS

IP Grade: IP66

Operating temperature: -30°C to +50°C

Storage temperature: -40°C to +85°C

Material: PC, Copper





EVD



EVDANCE

Electric Vehicle Quick Charge